

NEW!

Xi-Wob®

Patent 6932279

UP3™



Senninger's new UP3
(Universal Pivot Products Platform)
uses the proven technologies of the Xi-Wob,
but with significant benefits.

Xi-Wob FEATURES:

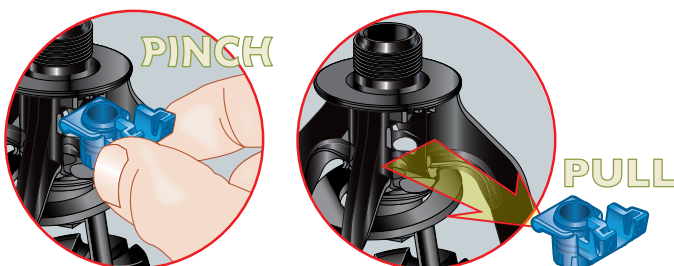
- Designed for use on semi-rigid PE or steel drops
- Patented counter-balance technology and rotary action for outstanding uniformity over a large area
- Ultra-low application intensity to preserve soil integrity
- Excellent distance of throw – up to 45.5 ft (13.8 m) diameter
- Four different groove geometries provide application flexibility
- Low pressure operation 10-15 psi (0.69-1.03 bar) saves money and energy
- Backed by Senninger's 2-year warranty on materials, workmanship and performance

UP3 FEATURES:

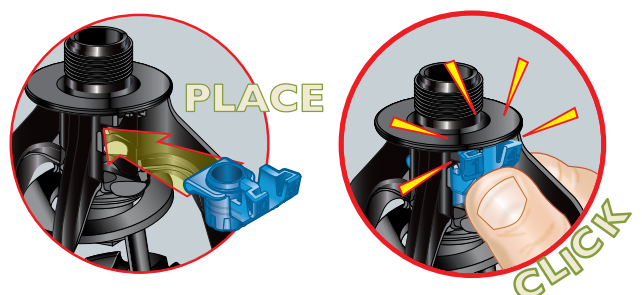
- Easy clean color-coded nozzle
- Dual nozzle carrier option to easily tailor your flow rate to the needs of your crop.
- Integrated base and bracket means fewer parts

EASY CLEAN NOZZLE (patent pending)

NOZZLE REMOVAL



NOZZLE INSTALLATION



Dual Nozzle Carrier (Patent Pending)

For installations needing two different flows from the same sprinkler package.



- Innovative easy change design, just *pinch and pull* - flip - then *place and click*
- Flexible material for durability from possible impact
- Nozzle flows clearly indicated with **high** and **low**
- Same nozzle carrier is universal to the i-Wob, Xi-Wob, LDN and Super Spray

QUALITY YOU CAN COUNT ON...

Senninger stands behind their products. Senninger products are backed by a two-year warranty on materials, workmanship, and performance. The nozzle is warranted to retain its original orifice size for five years.


Nozzle Visibility



- Color-coded
- The nozzle numbers on the ears correspond to orifice size in 64ths of an inch
- Half-sizes clearly marked on the ears and with notches on the lower edge
- Same nozzle is universal to the i-Wob, Xi-Wob, LDN and Super Spray
- Five-year warranty on nozzle orifice



Xi-Wob UP3

	 610 6-groove 10-degrees Medium Droplet	 615 6-groove 15-degrees Large Droplet	 910 9-groove 10-degrees Smaller Droplet	 605 Top 6-groove 5-degrees Medium Droplet
Nozzle sizes				
Minimum	#7 7/64" [2.78 mm]	#10 5/32" [3.97 mm]	#10 5/32" [3.97 mm]	#10 5/32" [3.97 mm]
Maximum*	#24 3/8" [9.53 mm]	#24 3/8" [9.53 mm]	#24 3/8" [9.53 mm]	#24 3/8" [9.53 mm]
Flows				
Minimum	1.12 gpm [254 L/hr]	2.25 gpm [511 L/hr]	2.25 gpm [511 L/hr]	2.25 gpm [511 L/hr]
Maximum	14.4 gpm [3271 L/hr]	14.4 gpm [3271 L/hr]	14.4 gpm [3271 L/hr]	12.06 gpm [2739 L/hr]
Maximum Spacing**				
at 6 ft [1.8 m] ground clearance	18 ft [5.49 m]	20 ft [6.10 m]	18 ft [5.49 m]	Height of main line
Pressure at Nozzle				
Minimum	10 psi [0.69 bar]	10 psi [0.69 bar]	10 psi [0.69 bar]	10 psi [0.69 bar]
Maximum	15 psi [1.03 bar]	15 psi [1.03 bar]	15 psi [1.03 bar]	10 psi [0.69 bar]

* It is recommended that larger nozzle sizes be used only on soils and slopes that can handle higher application rates.

** For optimum performance Senninger recommends the use of maximum spacing for 1-2 spans only.